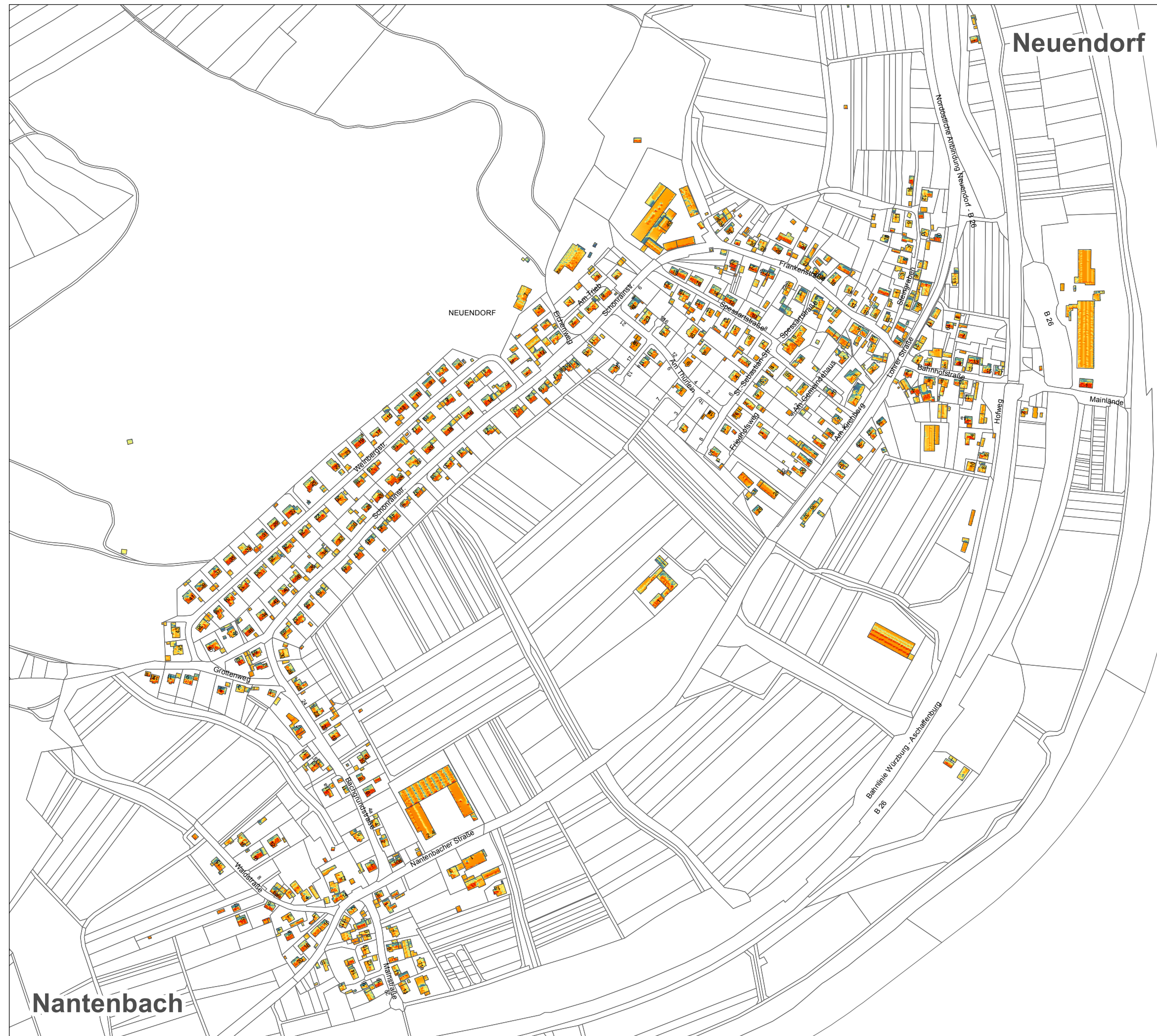
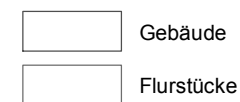
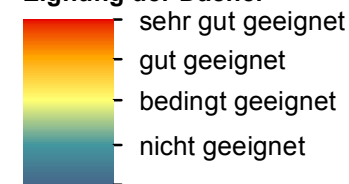


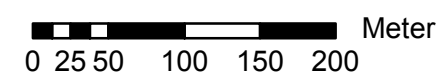
### Legende

#### Globalstrahlung

#### Eignung der Dächer



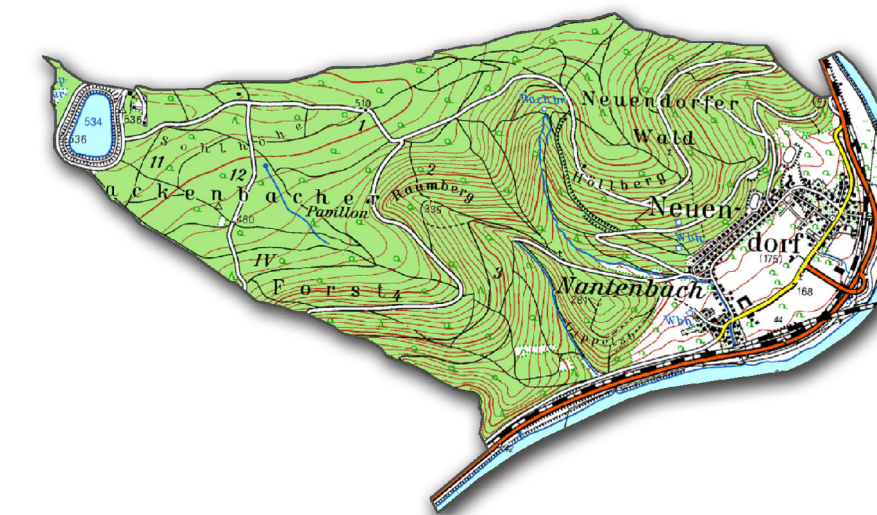
1:5.000



# Energiekonzept Neuendorf

Gemeinde Neuendorf  
Landkreis Main-Spessart, Bayern

Solarpotenzial  
Stand: 05.05.2014



 KLARLE GMBH  
BACHGASSE 8  
97990 WEIKERSHEIM  
WWW.KLAERLE.DE